



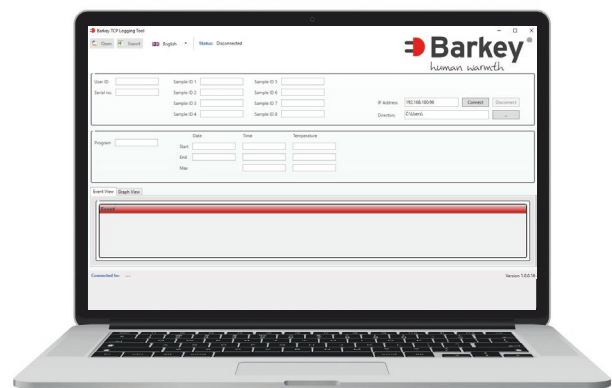
Thawing and warming of  
plasma and blood products  
– safe and reliable

## Barkey plasmatherm

The Barkey plasmatherm thaws FFP bags and warms blood, erythrocyte concentrates (EC), cryopreserved preparations, cryopreserved stem cells (HPC), Octaplas LG<sup>®</sup> or infusion solutions.

### Key features at a glance

- Thaws 4 bags at a time (in case of emergency up to 8)
- Simple and intuitive application
- Dry thawing device = reduced risk of contamination (BSH\* recommendation)
- High standard of hygiene due to dry warming (no direct contact to water)
- Smooth surfaces and rounded edges
- Easy to clean through wipe disinfection
- 2 leak detection sensors
- Shortcuts for plasma, blood, HPC, Octaplas and user program
- Large display with plain text
- Change of water just once a year
- Cushions conform to product



Document the tempering process with the Barkey TCP Logging Tool

\* recommended from the British Society for Hematology (BSH): British Society of Haematology Guidelines on the spectrum of fresh frozen plasma and cryoprecipitate products: their handling and use in various patient groups in the absence of major bleeding, in: British Journal of Hematology, 2018, 181, 54-67, p. 69

# Barkey plasmatherm

## Accessories (optional)

- Documentation software Barkey TCP Logging Tool (via Ethernet connection)
- Barcode reader
- Log printer

## Hygiene

- No risk of contamination due to dry thawing and warming (no direct contact to water)
- Easy to clean through wipe disinfection
- Corrosion-resistant

## Safety

- 2 redundant overtemperature alarms
- Adjustable temperature range from +37°C to +45°C (for plasma)
- Visual and acoustic signal after heating duration is complete or in case of error
- Visual inspection due to clear cushions and lid
- 2 leak detection sensors



Product	Barkey plasmatherm
Power supply	220-240 V 50/60 Hz or 100-120 V 50/60 Hz
Set temperature	+37°C to max. +45°C; US: +37°C
Dimensions	340 x 600 x 320 mm (WxDxH)
Weight without filling	19 kg
Filling quantity	9 l

Interfaces/Devices (optional)	Barcode scanner, Log printer, Ethernet port
MDR classification	Ila
Safety class	I, protective earthing
Certification	CE 0123
Barkey is certified	DIN EN ISO 13485