





## BLOOD COLLECTION MIXER MOD. EO51P-TC

### MAIN FEATURES

Thanks to their technology, exploiting reprogrammable last-generation micro-processors, these mixers can receive firmware updates that will alter their operation, to meet the different needs of various customers, and always be up-to-date with the regulations in force. Large blue LCD display with white backlighting, easily visible from any angle.

Mixing system, consisting of wide (which can also contain bags with filter), extractable (for easy cleaning) rocking tray, with mixing cycle of 5 seconds.

Automatic and manual tube clamping system, suitable for any type of tube, equipped with sensor to check tube presence / absence, for increased safety during blood collection.

Load cell volume transducer. Weighing accuracy  $\pm 1$  ml.

Automatic display conversion from grams to millilitres.

Automatic tare of the collection bag's weight.

Digital setting of target volume (from 200 ml. to 500 ml.), with possibility to change it during donation.

Automatic and continuous check of : DURATION OF BLOOD COLLECTION, COLLECTION FLOW (ml/min) , DATE , TIME , SET, REAL TAKEN , ALARM OCCURRED.

Digital setting of the visual and acoustic pre-alarm, to monitor the duration of the blood collection.

Automatic and continuous check of collection flow (ml/min), with visual and acoustic alarm for low and high flow. Digital setting of low and high flows values.

Automatic flow stop at the achievement of the preset volume with contemporaneous visual and acoustic alarm.

RS 232 Serial port for barcode reader.

Membrane keyboard for easy cleaning, which can also be used for manual data entry in case of barcode reader failure.

Internal battery pack lasting up to 12 hours. The unit can also be power-supplied by means of external accumulator.

Automatic calibration management software.

Internal memory storing up to 100 procedures.

#### DATA TRANSMISSION TO PC BY CABLE (RS485)

Interface possible to all types of operational software used by blood transfusion centres.

Possible connection to a Personal Computer with supervisor software, which allows real-time monitoring (up to 20 mixers simultaneously) of:

- Mixers operational status
- Preset blood collection volumes
- Real blood collection volumes , (value and BAR-GRAPH )
- Alarming condition: low flow, high flow, low battery etc...

The software can also store the following data on procedures: (DATE , TIME, DONOR CODE, OPERATOR CODE, PRESET TARGET VOLUME, ACTUAL VOLUME COLLECTED , DONATION DURATION, BAG TARE, BAG CODE, TEST TUBES CODE, ALARMS OCCURRED).

The software allows you to print daily reports containing all informations of the samples taken during the day.

### TECHNICAL DATA

- Code EO51P-TC
- AC/DC Power supply: input 100-240 VAC, 47-63 Hz, 0,9-0,3A Max  
output 24Vdc , 1.25A Max
- Operating with either AC supply or internal rechargeable batteries.
- Digital setting of target volumes (from 200 to 500 ml)
- Mixing cycle of 5 seconds.
- Dimensions mm 310 x 290 x 175 h.
- Net Weight Kgs. 3,5
- External Body in thermoformed ABS
- Packaging dimension: cm 50x35x35 h - Gross Weight: 4

### OPTIONAL ACCESSORIES

- Set of weights for complete calibration made up of N. 4 sample weights **M1 class certified** (N. 1 weight of 100 gr, N. 2 weights of 200 gr, N. 1 weight of 500 gr) to perform calibration or quality controls
- Mixer supporting cart with objects holder shelf in stainless steel with 2 swivelling wheels
- Aluminum hand case realized with new system **AHC – Aluminium Hi-Composite-** with interior padding, ideal for frequent transports.
- Barcode reader mod. Heron D130.
- Converter USB for cable connection between mixers and computer, mod. USB/RS485

Monitoring supervisor software allowing data acquisition from mixers in real time (Fig.1), with historical database of donations (Fig.2) and daily reports management (Fig.3), interface capability with any operational software.

Fig.1

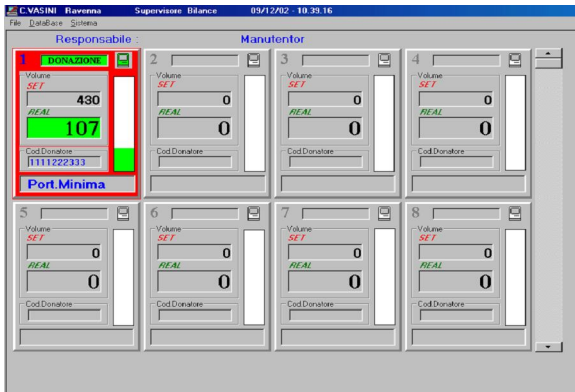


Fig.2

Data	Ora	Donazione	Op. Iniziale	Op. Finale	Set
01	12/11/01	16.32	00001811	00001810	230
002	12/11/01	16.36	00001811	00001810	310
001	12/11/01	16.45	00001811	00001810	365
002	12/11/01	16.49	00001811	00001810	360
001	12/11/01	17.08	22222333333333333333	1000000000000014	1A25 34496
002	12/11/01	17.12	22222333333333333333	1000000000000014	1A25 34496
002	14/11/01	09.36	0208201745112	12345678	11234
002	14/11/01	09.50	9703252507	020201745112	9703252507
002	14/11/01	10.23	262756	1	6
010	20/11/01	11.39	1111	2222	111
010	20/11/01	11.44	1	2	59
001	23/11/01	09.59	0	66	33
006	23/11/01	14.50	11	22	33
005	27/11/01	11.33	1	2	8
010	27/11/01	14.23	00001806	00001805	00001805
010	27/11/01	14.29	00001806	00001805	00001805
010	27/11/01	14.32	00001806	00001805	00001804
010	27/11/01	14.36	00001806	00001805	00001804
010	27/11/01	14.39	00001806	00001805	00001804
010	27/11/01	14.44	00001806	00001805	00001804
010	27/11/01	14.47	00001806	00001805	00001804
010	27/11/01	14.50	00001806	00001805	00001804

PRINTED DATE: gg/mm/aa

Fig.3

Mixer n°	date	time	Donor code	Init. Op.	Fin. Op.	set	actual	duration	tare	N° bags	N°Test tube	BATCH N° bag	Bag Code	alarms	In charge
001	01/01/04	14:00	857469	52144	355	360	360	00:15:25	44	1	1	145678	278962	MINIMUM : ____ T.OUT: 15 .MIN	Doctor. ROSSI
002	02/01/04	15:00	857470	64654	555	450	450	00:09:24	45	2	3	123456	753654	MINIMUM : ____	Doctor. ROSSI
003	03/01/04	16:00	857471	25781	748	500	500	00:07:24	55	4	3	156752	159635	MAXIMUM : ____	Doctor. ROSSI

**AT ANYTIME IT'S POSSIBLE TO BUY THE MODE OF TRANSMISSION IN RADIO FREQUENCY TO CONVERT THIS MODEL IN THE MIXER MOD. EO51P-TC-RF (advanced version)**

**COMPLYNG WITH THE CEE DIRECTIVES  
AND IN ACCORDANCE WITH TECHNICAL REGULATIONS CEI 60601**

The Company reserves the right to make changes and improvements at any time and without prior notice.  
Designed and made in Italy

